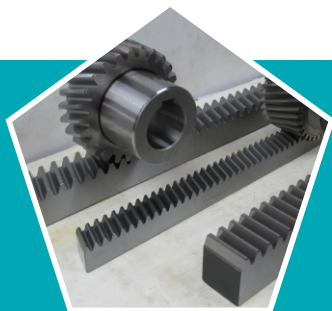
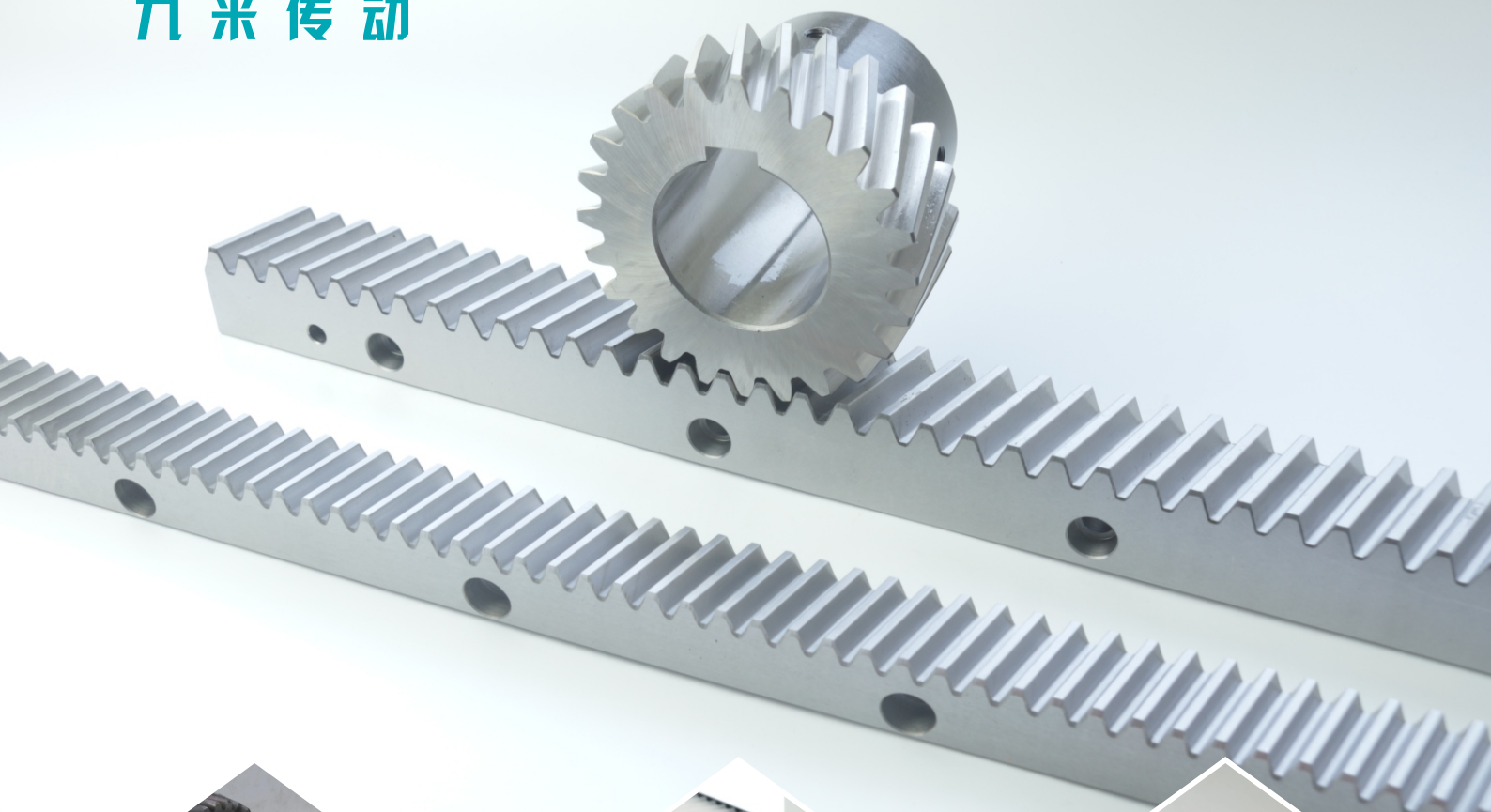
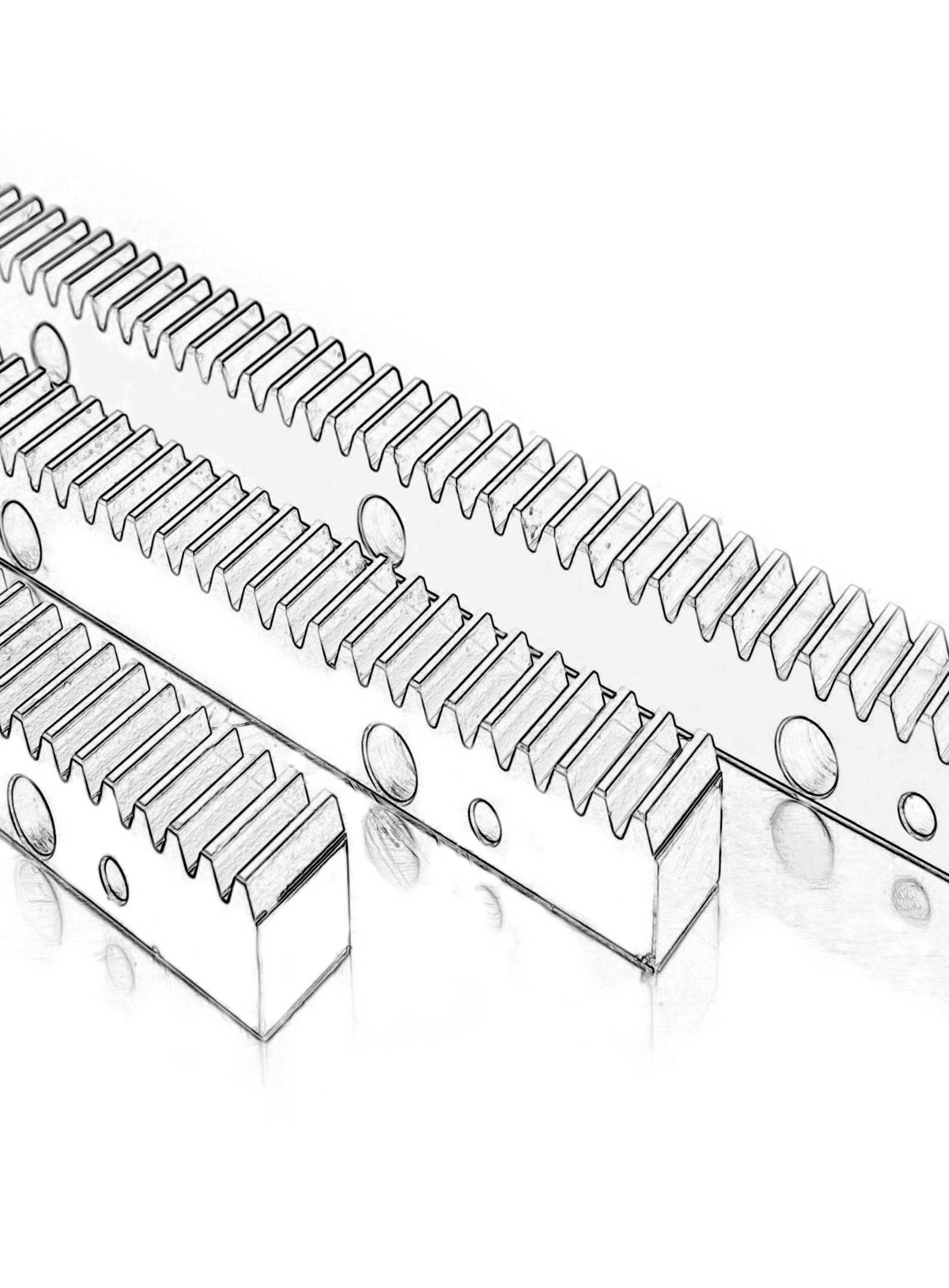


JMCD
九米传动



**JIUMI TRANSMISSION
CO.,LTD.**

精雕细琢每一米





合肥九米传动技术有限公司位于安徽省会——合肥，是一家专业从事齿条研发、制造的高新技术企业，由多名一直从事精密制造的专业人员共同创建。

合肥，是全球科技创新枢纽。近年来，合肥综合性国家科学中心、国家实验室、大科学装置等建设取得重大成果。高端创新要素密集、科技创新实力雄厚、国际创新交流活跃、创新成果辐射广泛。

九米公司创始人团队选址合肥，依托合肥的科技创新能力，以“制造先进的中国传动部件”为目标，凭借多年积累的精湛技术，先进的进口设备，逐步建立先进的生产管理和质量检测体系，充分保证产品的高质量，高性价比。公司生产的齿条精度等级可达德国DIN3962标准5级，一次性最大齿条长度可达3200mm，可根据客户需求，生产1-22模数的各种直/斜齿。

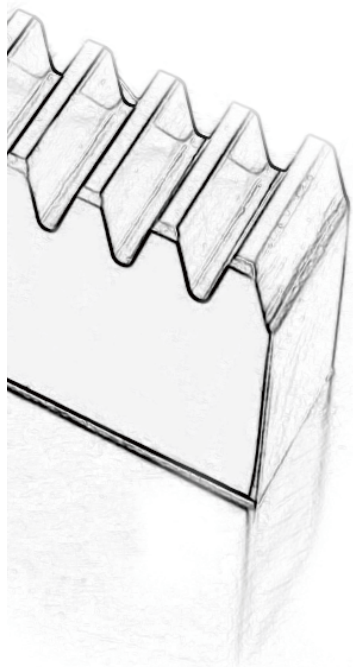
九米高精度研磨齿条，V型导轨齿条，广泛应用于光纤激光切割机、工业机器人桁架机械手，数控龙门加工中心、第七轴机器人、数控木工机械、汽车自动化生产线、印刷机械、玻璃切割机、自动化机械装备及其它传动行业。

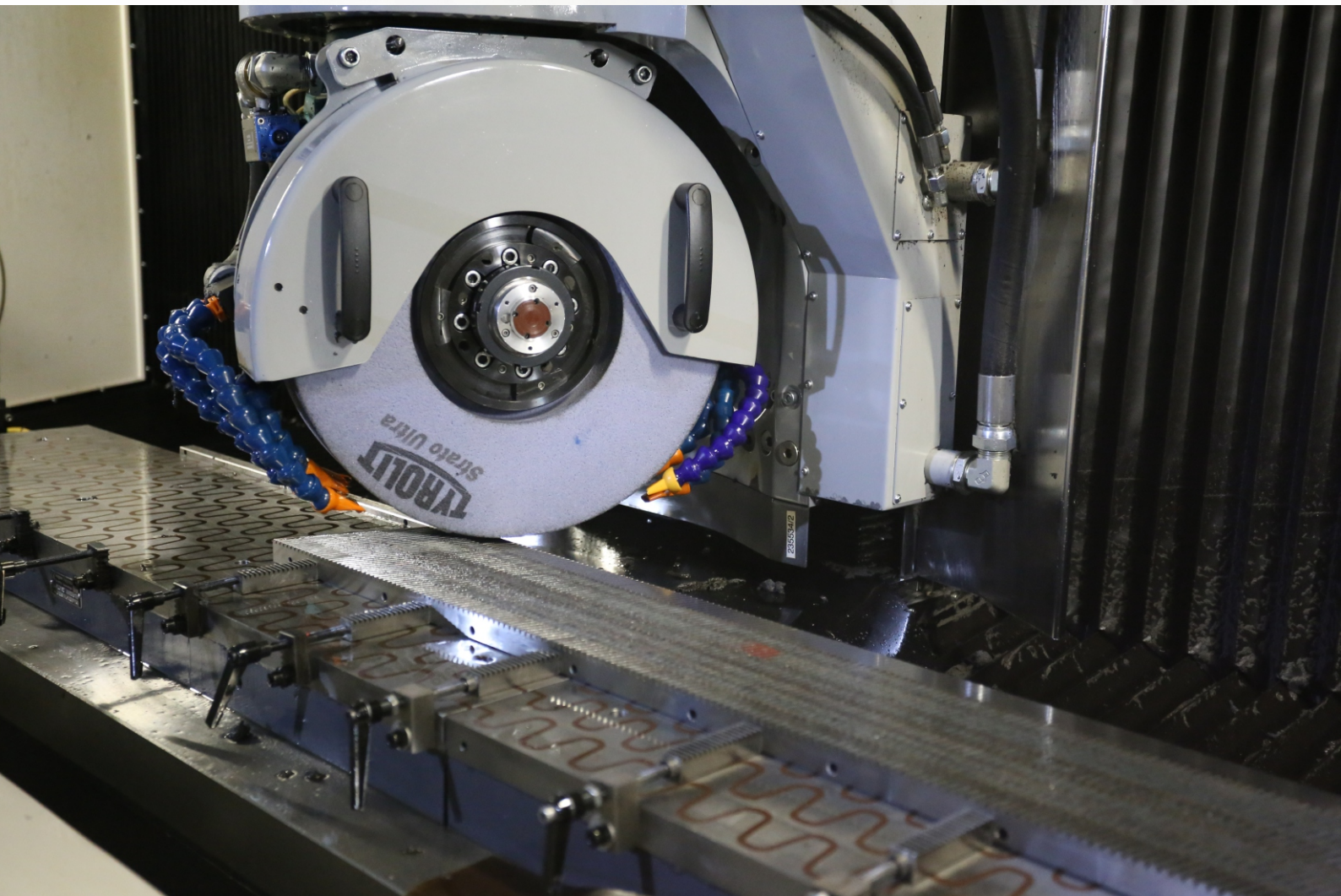
Hefei Jiumi Transmission Technology Co., Ltd. is located in Hefei, the capital of Anhui Province. It is a high-tech enterprise specializing in R&D and manufacturing of racks. It was jointly established by many professionals who have been engaged in precision manufacturing.

Hefei is a global scientific innovation hub. In recent years, major achievements have been made in the construction of Hefei's comprehensive national science center, national laboratories, and large scientific installations. High-end innovation elements are intensive, scientific and technological innovation strength is strong, international innovation exchanges are active, and innovation results are widely radiated.

The founder team of Jiu Mi Company chose Hefei. Relying on Hefei's technological innovation capabilities, with the goal of "manufacturing advanced Chinese transmission components", with years of accumulated superb technology and advanced imported equipment, it gradually established advanced production management and quality inspection. The system fully guarantees the high quality and high cost performance of the products. The precision grade of the racks produced by the company can reach German DIN3962 standard 5, and the maximum rack length can reach 3200mm at one time. According to customer needs, various straight/helical gears with 1-22 modules can be produced.

Nine-meter high-precision grinding rack, V-shaped guide rack, widely used in fiber laser cutting machine, industrial robot truss manipulator, CNC gantry machining center, seventh axis robot, CNC woodworking machinery, automotive automation production line, printing machinery, glass cutting Machinery, automatic machinery equipment and other transmission industries.

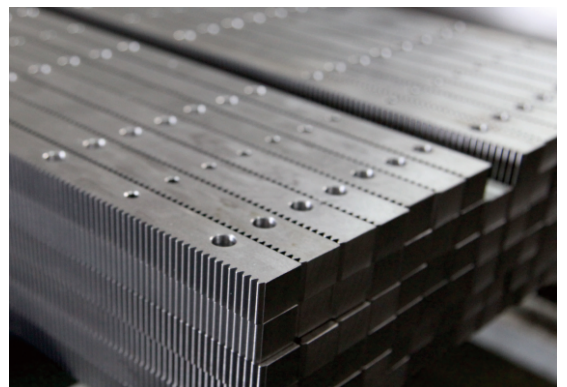




JIUMI TRANSMISSION CO.,LTD.

专业生产铣削齿条和磨削精密齿条。
磨削齿条精度可达德国DIN3962标准5级，模数m0.5-m22，长度可达3.2m。齿条有直齿和斜齿，可以齿面淬火，也可以整体渗碳淬火。

We are professional manufacturer of milled racks & ground precision racks. The accuracy of our ground racks can reach DIN3962 Grade 5. The module varies from m0.5-m22. The length can be up to 2.5m. The teeth can be straight or helical. The racks can be teeth hardened or case hardened



**JIUMI
TRANSMISSION
CO.,LTD.**



型号说明

Code Description:

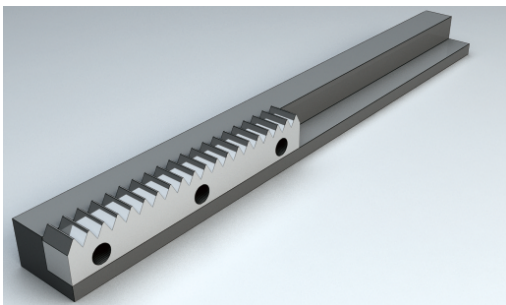
材料 Material	齿型 Rack Type	棒形 Shape	齿面处理 Treatment of Tooth	硬度处理 Hardness	模数 Module	长度 Length	钻孔 Holes	四面研磨 Sides Ground
C ↓ C=S45C	S ↓ S=直齿 Straight	I ↓ T=四角棒 Tetragon	G ↓ G=磨削 Ground	H/O ↓ H=硬化处理 Hardened	20 ↓ M2	05 ↓ 05=500mm	N ↓ N=无钻孔 No Holes	-G ↓ G=四面研磨 Sides Ground
M=SCM440	H=斜齿 Helical	R=圆棒 Round	M=精铣 Milled	Q=调质 Tempered & quenched 无硬度处理 Without Hardness		10=1,000mm		

齿条装配须知

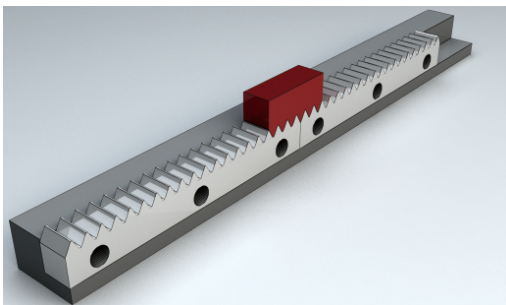
齿条可以对接安装到任意长度。装配时两根齿条之间的间隙需调整至配合齿距。安装齿条需使用定位销。

Assembling Instruction:

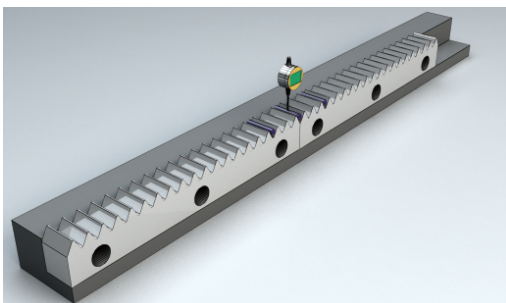
The racks can be connected to any length. The gap between two adjacent racks should be adjusted to match the pitch. Locking pins should be used when assembling the racks.



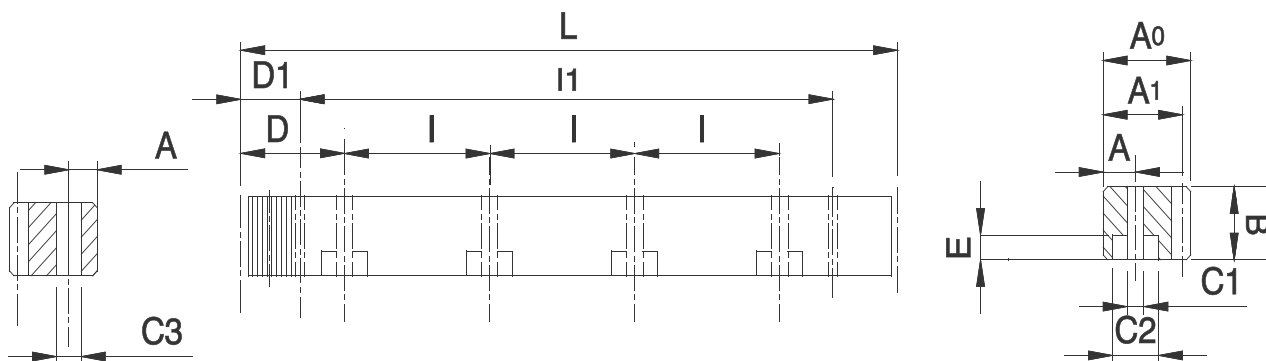
- 1、定位并紧固齿条。
Fix the rack.



- 2、用反向齿规为下一根齿条定位。
Use opposite tooth gauge to fix next ack.



- 3、逐个检查每个接口，用量针检测齿条的平行度。
Check every joint and measure the levelling of the racks with round bars.



单位/Dimension:mm

型号 Code	模数 Module	L	齿数 Tooth No.	B	A0	A1	D	I	孔数 Hole No.	A	C1	C2	E	D1	I1	C3
CSTGH 010 05	1	499.51	159	15	15	14	-	-	-	-	-	-	-	-	-	-
CSTGH 015 05	1.5	499.51	106	19	19	17.5	62.44	124.88	4	8	7	11	7	29	440.5	5.7
CSTGH 015 10	1.5	999.03	212	19	19	17.5	62.44	124.88	8	8	7	11	7	29	941	5.7
CSTGH 020 05	2	502.65	80	24	24	22	62.83	125.66	4	8	7	11	7	31.3	440.1	5.7
CSTGH 020 10	2	1005.31	160	24	24	22	62.83	125.66	8	8	7	11	7	31.3	942.7	5.7
CSTGH 030 05	3	508.94	54	29	29	26	63.62	127.23	4	9	10	15	9	34.4	440.1	7.7
CSTGH 030 10	3	1017.88	108	29	29	26	63.62	127.23	8	9	10	15	9	34.4	949.1	7.7
CSTGH 040 05	4	502.65	40	39	39	35	62.83	125.66	4	12	10	15	9	37.5	427.7	7.7
CSTGH 040 10	4	1005.31	80	39	39	35	62.83	125.66	8	12	10	15	9	37.5	930.3	7.7
CSTGH 050 05	5	502.65	32	49	39	34	62.83	125.66	4	12	14	20	13	30.1	442.4	11.7
CSTGH 050 10	5	1005.31	64	49	39	34	62.83	125.66	8	12	14	20	13	30.1	945	11.7
CSTGH 060 05	6	508.94	27	59	49	43	63.62	127.23	4	16	18	26	17	31.4	446.1	15.7
CSTGH 060 10	6	1017.88	54	59	49	43	63.62	127.23	8	16	18	26	17	31.4	955.0	15.7
CSTGH 080 05	8	502.65	20	79	79	71	62.83	125.66	4	25	22	33	21	26.6	449.5	19.7
CSTGH 080 10	8	1005.31	40	79	79	71	62.83	125.66	8	25	22	33	21	26.6	952	19.7
CSTGH 100 10	10	1005.31	32	99	99	89	62.83	125.66	8	32	33	48	32	125.7	753.96	19.7
CSTGH 120 12	12	1017.90	27	120	120	108	63.6	127.23	8	40	39	58	38	127.23	763.4	19.7

参数说明：

精度等级：DIN 6h25

材料：(S45C中碳钢) C45

齿型：直齿

C面处理：磨削

硬度处理：高週波，硬度为HRC48~52度

四面研磨：有

压力角：20度

总齿节误差：0.036mm/1000mm

Manufacturing Description:

Precision Grade: DIN 6h25

Material: (S45C Medium Carbon Steel) C45

Type: Straight Rack

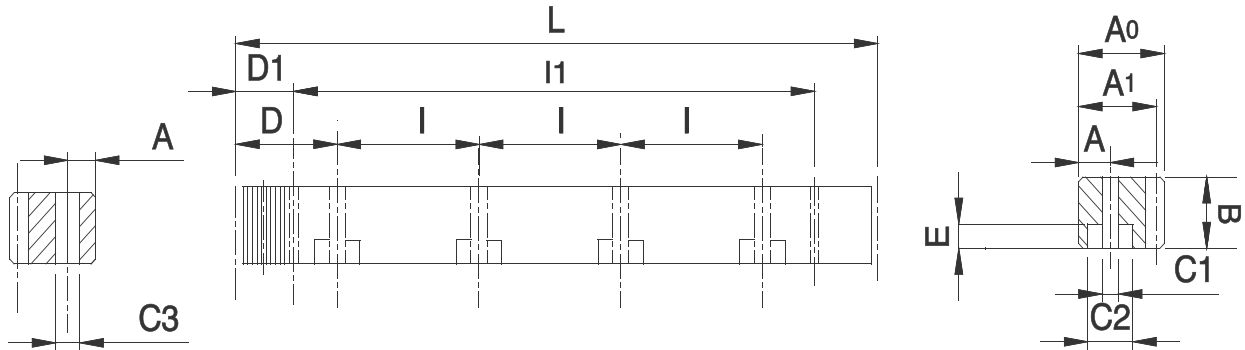
Treatment of Teeth: Ground

Hardness: High Frequency HRC48~52 degree.

Sides Ground: Included

Pressure Angle: 20 degree

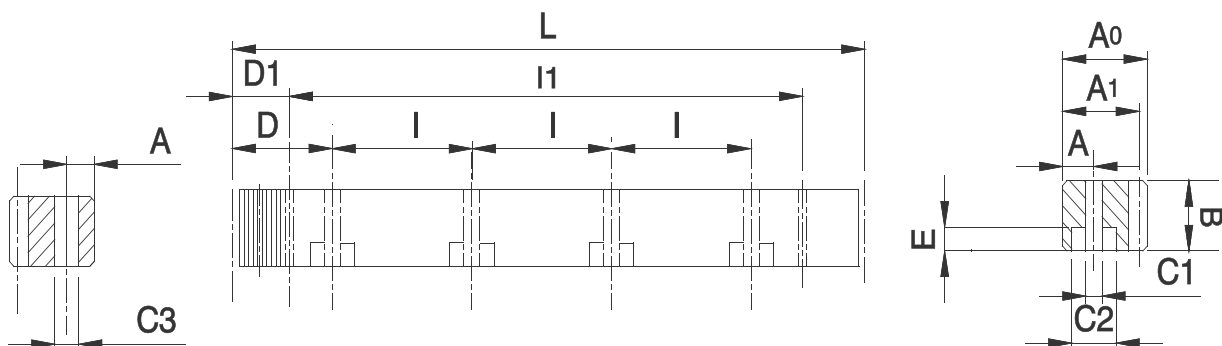
Total Pitch Error:0.036mm/1000mm



单位/Dimension:mm

型号 Code	模数 Module	L	齿数 Teeth No.	B	A0	A1	D	I	孔数 Hole No.	A	C1	C2	E	D1	I1	C3		
CSTMQ	010	05	1	499.51	159	15	15	14	-	-	-	-	-	-	-	-		
CSTMQ	015	05	1.5	499.51	106	19	19	17.5	62.44	124.88	4	8	7	11	7	29	441.5	5.7
CSTMQ	015	10	1.5	999.03	212	19	19	17.5	62.44	124.88	8	8	7	11	7	29	941	5.7
CSTMQ	020	05	2	502.65	80	24	24	22	62.83	125.66	4	8	7	11	7	31.3	440.1	5.7
CSTMQ	020	10	2	1005.31	160	24	24	22	62.83	125.66	8	8	7	11	7	31.3	942.7	5.7
CSTMQ	030	05	3	508.94	54	29	29	26	63.62	127.23	4	9	10	15	9	34.4	440.1	7.7
CSTMQ	030	10	3	1017.88	108	29	29	26	63.62	127.23	8	9	10	15	9	34.4	949.1	7.7
CSTMQ	040	05	4	502.65	40	39	39	35	62.83	125.66	4	12	10	15	9	37.5	427.7	7.7
CSTMQ	040	10	4	1005.31	80	39	39	35	62.83	125.66	8	12	10	15	9	37.5	930.3	7.7
CSTMQ	050	05	5	502.65	32	49	49	34	62.83	125.66	4	12	14	20	13	30.1	442.4	11.7
CSTMQ	050	10	5	1005.31	64	49	49	34	62.83	125.66	8	12	14	20	13	30.1	945.0	11.7
CSTMQ	060	05	6	508.94	27	59	59	43	63.62	127.23	4	16	18	26	17	31.4	446.1	15.7
CSTMQ	060	10	6	1017.88	54	59	59	43	63.62	127.23	8	16	18	26	17	31.4	955.0	15.7
CSTMQ	080	05	8	502.65	20	79	79	71	62.83	125.66	4	25	22	33	21	26.6	449.5	19.7
CSTMQ	080	10	8	1005.31	40	79	79	71	62.83	125.66	8	25	22	33	21	26.6	952	19.7
CSTMQ	100	10	10	1005.31	32	99	99	89	62.83	125.66	8	32	33	48	32	125.7	753.96	19.7

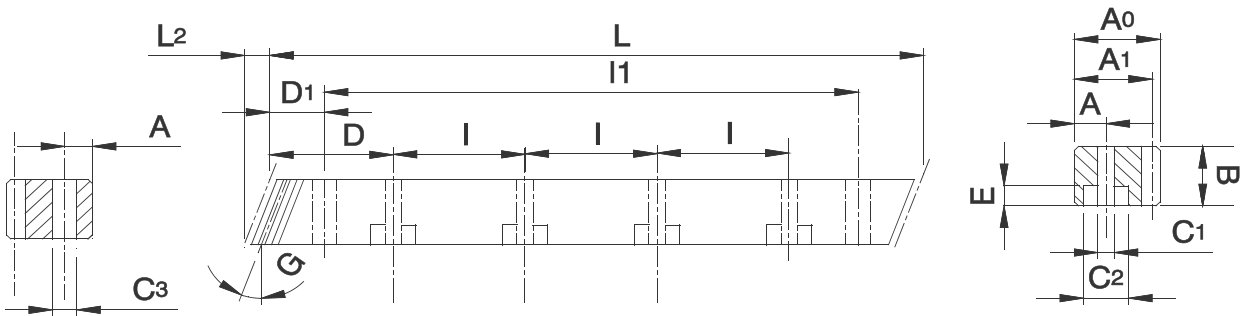
参数说明：	Manufacturing Description:
精度等级：DIN 8e27	Precision Grade: DIN 8e27
材料：S45C	Material: S45C
齿型：直齿	Type: Straight Rack
齿面处理：精铣	Treatment of Teeth: Milled
硬度处理：硬度HRC18~20度	Hardness: HRC18~20 degree
四面研磨：无	Sides Ground: not Included
压力角：20度	Pressure Angle: 20 Degree
总齿节误差：0.1mm/1000mm	Total Pitch Error:0.1mm/1000mm



单位/Dimension:mm

型号 Code	模数 Module	L	齿数 Tooth No.	B	A0	A1	D	I	孔数 Hole No.	A	C1	C2	E	D1	I1	C3	
CSTMH 010	05	1	499.51	159	15	15	—	—	—	—	—	—	—	—	—	—	
CSTMH 015	05	1.5	499.51	106	19	19	17.5	62.44	124.88	4	8	7	11	7	29.0	441.5	5.7
CSTMH 015	10	1.5	999.03	212	19	19	17.5	62.44	124.88	8	8	7	11	7	29.0	941.0	5.7
CSTMH 020	05	2	502.65	80	24	24	22	62.83	125.66	4	8	7	11	7	31.3	440.1	5.7
CSTMH 020	10	2	1005.31	160	24	24	22	62.83	125.66	8	8	7	11	7	31.3	942.7	5.7
CSTMH 030	05	3	508.94	54	29	29	26	63.62	127.23	4	9	10	15	9	34.4	440.1	7.7
CSTMH 030	10	3	1017.88	108	29	29	26	63.62	127.23	8	9	10	15	9	34.4	949.1	7.7
CSTMH 040	05	4	502.65	40	39	39	35	62.83	125.66	4	12	10	15	9	37.5	427.7	7.7
CSTMH 040	10	4	1005.31	80	39	39	35	62.83	125.66	8	12	10	15	9	37.5	930.3	7.7
CSTMH 050	05	5	502.65	32	49	39	34	62.83	125.66	4	12	14	20	13	30.1	442.4	11.7
CSTMH 050	10	5	1005.31	64	49	39	34	62.83	125.66	8	12	14	20	13	30.1	945	11.7
CSTMH 060	05	6	508.94	27	59	49	43	63.62	127.23	4	16	18	26	17	31.4	446.1	15.7
CSTMH 060	10	6	1017.88	54	59	49	43	63.62	127.23	8	16	18	26	17	31.4	955	15.7
CSTMH 080	05	8	502.65	20	79	79	71	62.83	125.66	4	25	22	33	21	26.6	449.45	19.7
CSTMH 080	10	8	1005.31	40	79	79	71	62.83	125.66	8	25	22	33	21	26.6	952	19.7
CSTMH 100	10	10	1005.31	32	99	99	89	62.83	125.66	8	32	33	48	32	125.7	753.96	19.7

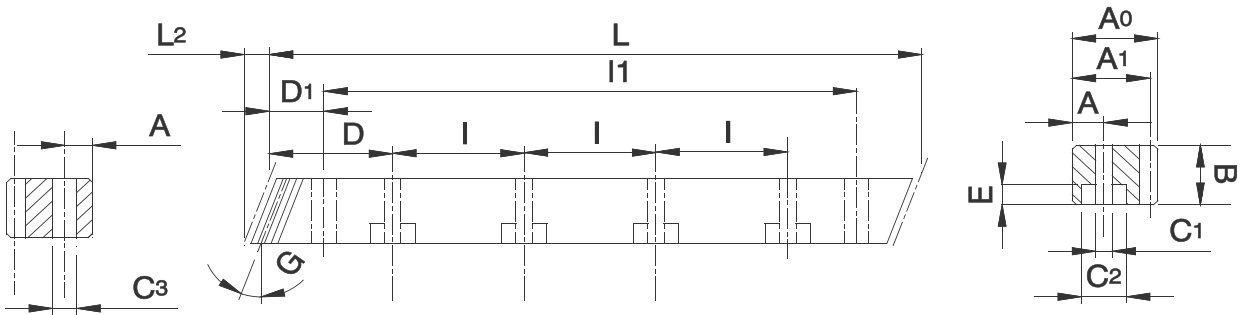
参数说明：	Manufacturing Description:
精度等级：DIN 10e27	Precision grade: DIN 10e27
材料：S45C	Material: S45C
齿型：直齿	Type: Straight Rack
齿面处理：精铣	Treatment of Teeth: Milled
硬度处理：高週波，硬度为HRC48~52度	Hardness: High Frequency HRC 48-52 degree
四面研磨：无	Sides ground: not Included
压力角：20度	Pressure Angle:20 degree
总齿节误差：0.2mm/1000mm	Total pitch Error: 0.2mm/1000mm



单位/Dimension:mm

型号 Code	模数 Module	L	L2	齿数 Tooth No.	B	A0	A1	D	I	孔数 Hole No.	A	C1	C2	E	D1	I1	C3
CHTGH 010 05	1	500.00	3.14	150	15	15	14	-	-	-	-	-	-	-	-	-	-
CHTGH 015 05	1.5	500.00	6.7	100	19	19	17.5	62.50	125	4	8	7	11	7	31.7	436.6	5.7
CHTGH 015 10	1.5	1000.00	6.7	200	19	19	17.5	62.50	125	8	8	7	11	7	31.7	936.6	5.7
CHTGH 020 05	2	500.00	8.5	75	24	24	22	62.50	125	4	8	7	11	7	31.7	436.6	5.7
CHTGH 020 10	2	1000.00	8.5	150	24	24	22	62.50	125	8	8	7	11	7	31.7	936.6	5.7
CHTGH 030 05	3	500.00	10.3	50	29	29	26	62.50	125	4	9	10	15	9	35.0	430.0	7.7
CHTGH 030 10	3	1000.00	10.3	100	29	29	26	62.50	125	8	9	10	15	9	35.0	930.0	7.7
CHTGH 040 05	4	506.67	13.8	38	39	39	35	62.50	125	4	12	10	15	9	33.3	433.0	7.7
CHTGH 040 10	4	1000.00	13.8	75	39	39	35	62.50	125	8	12	10	15	9	33.3	933.4	7.7
CHTGH 050 05	5	500.00	17.4	30	49	49	34	62.50	125	4	12	14	20	13	37.5	425.0	11.7
CHTGH 050 10	5	1000.00	17.4	60	49	49	34	62.50	125	8	12	14	20	13	37.5	925.0	11.7
CHTGH 060 05	6	500.00	20.9	25	59	59	43	62.50	125	4	16	18	26	17	37.5	425.0	15.7
CHTGH 060 10	6	1000.00	20.9	50	59	59	43	62.50	125	8	16	18	26	17	37.5	925.0	15.7
CHTGH 080 05	8	480.00	28.0	18	79	79	71	60.00	120	4	25	22	33	21	120.0	240.0	19.7
CHTGH 080 10	8	960.00	28.0	36	79	79	71	60.00	120	8	25	22	33	21	120.0	720.0	19.7
CHTGH 100 10	10	1000.00	35.11	30	99	99	89	62.50	125	8	32	33	48	32	125.0	750.0	19.7
CHTGH 120 10	12	1000.00	42.56	25	120	120	108	40.00	125	8	40	39	58	38	125.0	750.0	19.7

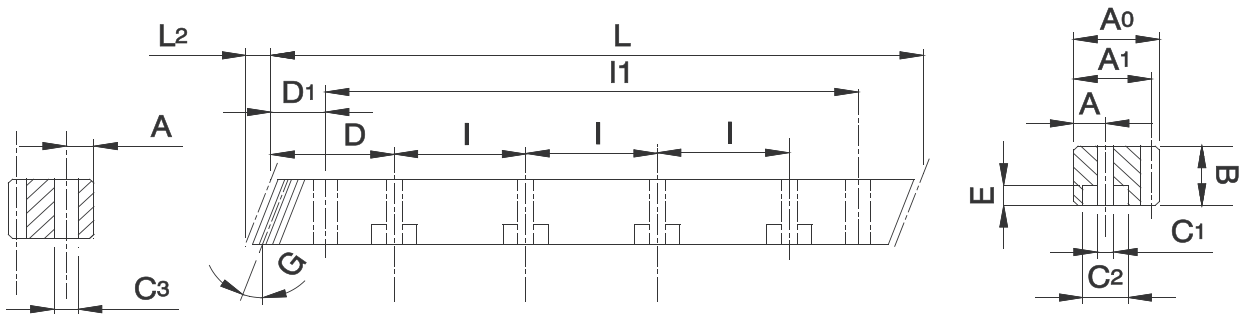
参数说明：	Manufacturing Description:
精度等级：DIN 6h25	Precision Grade: DIN 6h25
材料：S45C	Material: S45C
齿型：斜齿	Type: Helical Rack
齿面处理：磨削	Treatment of Teeth: Ground
硬度处理：高週波,硬度为HRC48~52度	Hardness: Heat treatment:48~52 degree
四面研磨：有	Sides Ground: Included
右旋角：19° 31'42"	Right hand angle: 19° 31'42"
压力角：20度	Pressure angle: 20 Degree
总齿节误差：0.036mm/1000mm	Total Pitch Error: 0.036mm/1000mm



单位/Dimension:mm

型号 Code	模数 Module	L	L2	齿数 Tooth No.	B	A0	A1	D	I	孔数 Hole No.	A	C1	C2	E	D1	I1	C3		
CHTMQ	010	05	1	500.00	3.14	150	15	15	14	-	-	-	-	-	-	-	-		
CHTMQ	015	05	1.5	500.00	6.7	100	19	19	17.5	62.5	125	4	8	7	11	7	31.7	436.6	5.7
CHTMQ	015	10	1.5	1000.00	6.7	200	19	19	17.5	62.5	125	8	8	7	11	7	31.7	936.6	5.7
CHTMQ	020	05	2	500.00	8.9	75	24	24	22	62.5	125	4	8	7	11	7	31.7	436.6	5.7
CHTMQ	020	10	2	1000.00	8.9	150	24	24	22	62.5	125	8	8	7	11	7	31.7	936.6	5.7
CHTMQ	030	05	3	500.00	10.6	50	29	29	26	62.5	125	4	9	10	15	9	35.0	430.0	7.7
CHTMQ	030	10	3	1000.00	10.6	100	29	29	26	62.5	125	8	9	10	15	9	35.0	930.0	7.7
CHTMQ	040	05	4	506.67	14.2	38	39	39	35	62.5	125	4	12	10	15	9	33.3	433.0	7.7
CHTMQ	040	10	4	1000.00	14.2	75	39	39	35	62.5	125	8	12	10	15	9	33.3	933.4	7.7
CHTMQ	050	05	5	500.00	17.4	30	49	39	34	62.5	125	4	12	14	20	13	37.5	425.0	11.7
CHTMQ	050	10	5	1000.00	17.4	60	49	39	34	62.5	125	8	12	14	20	13	37.5	925.0	11.7
CHTMQ	060	05	6	500.00	20.9	25	59	49	43	62.5	125	4	16	18	26	17	37.5	425.0	15.7
CHTMQ	060	10	6	1000.00	20.9	50	59	49	43	62.5	125	8	16	18	26	17	37.5	925.0	15.7
CHTMQ	080	05	8	480.00	28.0	18	79	79	71	60.0	120	4	25	22	33	21	120.0	240.0	19.7
CHTMQ	080	10	8	960.00	28.0	36	79	79	71	60.0	120	8	25	22	33	21	120.0	720.0	19.7
CHTMQ	100	10	10	1000.00	35.11	30	99	99	89	62.5	125	8	32	33	48	32	125.0	750.0	19.7

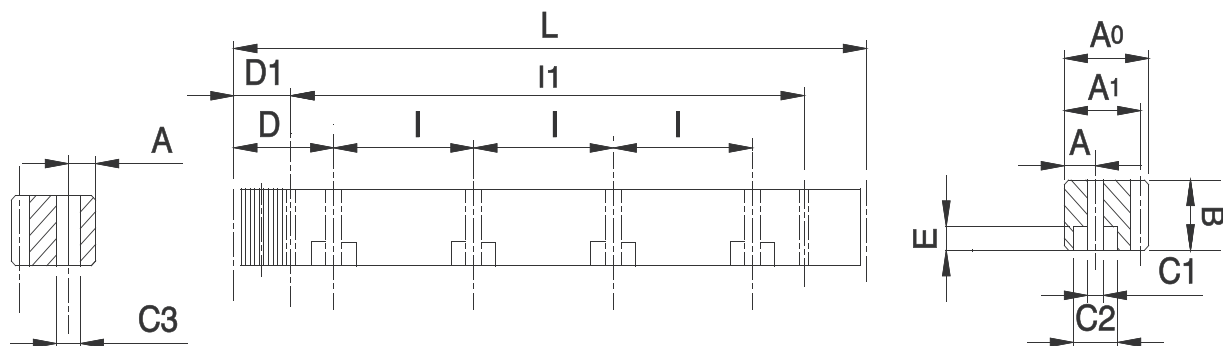
参数说明：	Manufacturing Description:
精度等级：DIN 8e27	Precision Grade: DIN 8e27
材料：S45C	Material: S45C
齿型：斜齿	Type: Helical Rack
齿面处理：精铣	Treatment of Teeth: Milled
硬度处理：调质处理，硬度HRC18~20度	Hardness: Qucnched:HRC18~20 Degree
四面研磨：无	Sides Ground: not Included
右旋角：19° 31'42"	Right Hand Angle: 19° 31'42"
压力角：20度	Pressure angle: 20 degree.
总齿节误差:0.1mm/1000mm	Total Pitch Error:0.1mm/1000mm



单位/Dimension:mm

型号 Code	模数 Module	L	L2	齿数 Tooth No.	B	A0	A1	D	I	孔数 Hole No.	A	C1	C2	E	D1	I1	C3	
CHTMH 010	05	1	500.00	5.35	150	15	15	14	-	-	-	-	-	-	-	-	-	
CHTMH 015	05	1.5	500.00	6.7	100	19	19	17.5	62.5	125	4	8	7	11	7	31.7	436.6	5.7
CHTMH 015	10	1.5	1000.00	6.7	200	19	19	17.5	62.5	125	8	8	7	11	7	31.7	936.6	5.7
CHTMH 020	05	2	500.00	8.5	75	24	24	22	62.5	125	4	8	7	11	7	31.7	436.6	5.7
CHTMH 020	10	2	1000.00	8.5	150	24	24	22	62.5	125	8	8	7	11	7	31.7	936.6	5.7
CHTMH 030	05	3	500.00	10.3	50	29	29	26	62.5	125	4	9	10	15	9	35.0	430.0	7.7
CHTMH 030	10	3	1000.00	10.3	100	29	29	26	62.5	125	8	9	10	15	9	35.0	930.0	7.7
CHTMH 040	05	4	506.67	13.8	38	39	39	35	62.5	125	4	12	10	15	9	33.3	433.0	7.7
CHTMH 040	10	4	1000.00	13.8	75	39	39	35	62.5	125	8	12	10	15	9	33.3	933.0	7.7
CHTMH 050	05	5	500.00	17.4	30	49	39	34	62.5	125	4	12	14	20	13	37.5	425.0	11.7
CHTMH 050	10	5	1000.00	17.4	60	49	39	34	62.5	125	8	12	14	20	13	37.5	925.0	11.7
CHTMH 060	05	6	500.00	20.9	25	59	49	43	62.5	125	4	16	18	26	17	37.5	425.0	15.7
CHTMH 060	10	6	1000.00	20.9	50	59	49	43	62.5	125	8	16	18	26	17	37.5	925.0	15.7
CHTMH 080	05	8	480.00	28.0	18	79	79	71	60.0	120	4	25	22	33	21	120	240.0	19.7
CHTMH 080	10	8	960.00	28.0	36	79	79	71	60.0	120	8	25	22	33	21	120	720.0	19.7
CHTMH 100	10	10	1000.00	35.11	30	99	99	89	62.5	125	8	32	33	48	32	125	750.0	19.7
CHTMH 120	10	12	1000.00	42.56	25	120	120	108	40	125	8	40	39	58	38	102.5	750.0	19.7

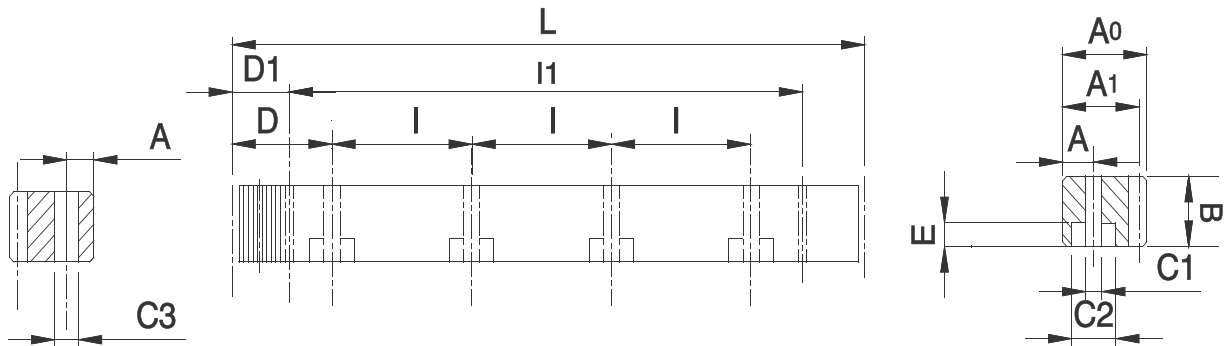
参数说明：	Manufacturing Description:
精度等级：DIN 10e27	Precision Grade: DIN 10e27
材料：S45C	Material: S45C
齿型：斜齿	Type: Helical Rack
齿面处理：精铣	Treatment of Teeth: Milled
硬度处理：高週波,硬度为HRC48~52度	Hardness: High Frequency.HRC48~52 Degree
四面研磨：无	Sides Ground: not included
右旋角：19° 31'42"	Right Hand Angle: 19° 31'42"
压力角：20 度	Pressure Angle: 20 Degree
总齿节误差：0.2mm/1000mm	Total Pitch Error:0.2mm/1000mm



单位/Dimension:mm

型号 Code			模数 Module	L	齿数 Tooth No.	B	A0	A1	D	I	孔数 Hole No.	A	C1	C2	E	D1	I1	C3
MSTGH	010	05	1	499.51	159	15	15	14	-	-	-	-	-	-	-	-	-	-
MSTGH	015	05	1.5	499.51	106	19	19	17.5	62.44	124.88	4	8	7	11	7	29.0	441.5	5.7
MSTGH	015	10	1.5	999.03	212	19	19	17.5	62.44	124.88	8	8	7	11	7	29.0	941.0	5.7
MSTGH	020	05	2	502.65	80	24	24	22	62.83	125.66	4	8	7	11	7	31.3	440.1	5.7
MSTGH	020	10	2	1005.31	160	24	24	22	62.83	125.66	8	8	7	11	7	31.3	942.7	5.7
MSTGH	030	05	3	508.94	54	29	29	26	63.62	127.23	4	9	10	15	9	34.4	440.1	7.7
MSTGH	030	10	3	1017.88	108	29	29	26	63.62	127.23	8	9	10	15	9	34.4	949.1	7.7
MSTGH	040	05	4	502.65	40	39	39	35	62.83	125.66	4	12	10	15	9	37.5	427.7	7.7
MSTGH	040	10	4	1005.31	80	39	39	35	62.83	125.66	8	12	10	15	9	37.5	930.3	7.7
MSTGH	050	05	5	502.65	32	49	49	34	62.83	125.66	4	12	14	20	13	30.1	442.4	11.7
MSTGH	050	10	5	1005.31	64	49	49	34	62.83	125.66	8	12	14	20	13	30.1	945	11.7
MSTGH	060	05	6	508.94	27	59	59	43	63.62	127.23	4	16	18	26	17	31.4	446.1	15.7
MSTGH	060	10	6	1017.88	54	59	59	43	63.62	127.23	8	16	18	26	17	31.4	955.0	15.7
MSTGH	080	05	8	502.65	20	79	79	71	62.83	125.66	4	25	22	33	21	26.6	449.5	19.7
MSTGH	080	10	8	1005.31	40	79	79	71	62.83	125.66	8	25	22	33	21	26.6	952	19.7
MSTGH	100	10	10	1005.31	32	99	99	89	62.83	125.66	8	32	33	48	32	125.7	753.96	19.7

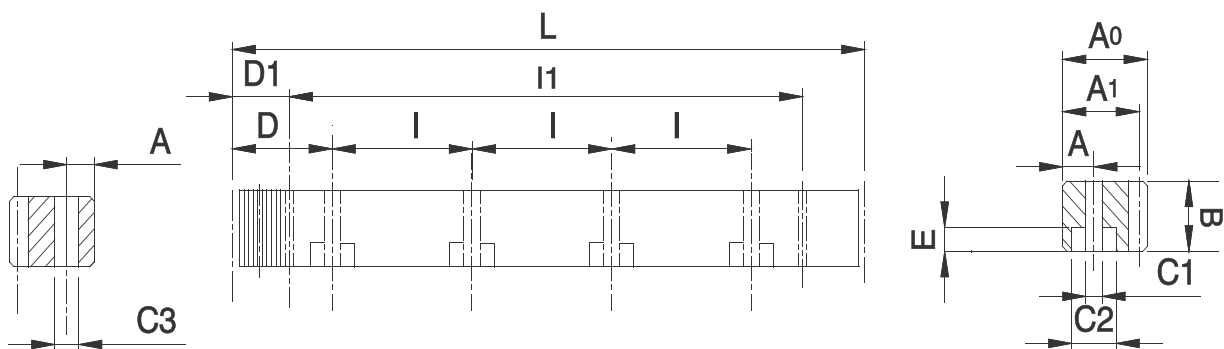
参数说明：	Manufacturing Description:
精度等级：DIN 6h25	Precision Grade: DIN 6h25
材料：(SCM440铬钼合金钢) 42CrMo4	Material: (scm440 Chromium Molybdenum Alloy Steel) 42CrMo4
齿型：直齿	Type: Straight Rack
齿面处理：磨削	Treatment Of Teeth: Ground
硬度处理：高週波，硬度为HRC50~55度	Hardness: Heat Treatment;50-55 Degree
四面研磨：有	Sides Ground: Included
压力角：20度	Pressure Angle: 20 Degree
总齿节误差：0.036mm/1000mm	Total Pitch Error:0.036mm/1000mm



单位/Dimension:mm

型号 Code			模数 Module	L	齿数 Tooth No.	B	A0	A1	D	I	孔数 Hole No.	A	C1	C2	E	D1	I1	C3
MSTMQ	010	05	1	499.51	159	15	15	14	-	-	-	-	-	-	-	-	-	-
MSTMQ	015	05	1.5	499.51	106	19	19	17.5	62.44	124.88	4	8	7	11	7	29.0	441.5	5.7
MSTMQ	015	10	1.5	999.03	212	19	19	17.5	62.44	124.88	8	8	7	11	7	29.0	941.0	5.7
MSTMQ	020	05	2	502.65	80	24	24	22	62.83	125.66	4	8	7	11	7	31.3	440.1	5.7
MSTMQ	020	10	2	1005.31	160	24	24	22	62.83	125.66	8	8	7	11	7	31.3	942.7	5.7
MSTMQ	030	05	3	508.94	54	29	29	26	63.62	127.23	4	9	10	15	9	34.4	440.1	7.7
MSTMQ	030	10	3	1017.88	108	29	29	26	63.62	127.23	8	9	10	15	9	34.4	949.1	7.7
MSTMQ	040	05	4	502.65	40	39	39	35	62.83	125.66	4	12	10	15	9	37.5	427.7	7.7
MSTMQ	040	10	4	1005.31	80	39	39	35	62.83	125.66	8	12	10	15	9	37.5	930.3	7.7
MSTMQ	050	05	5	502.65	32	49	39	34	62.83	125.66	4	12	14	20	13	30.1	442.4	11.7
MSTMQ	050	10	5	1005.31	64	49	39	34	62.83	125.66	8	12	14	20	13	30.1	945	11.7
MSTMQ	060	05	6	508.94	27	59	49	43	63.62	127.23	4	16	18	26	17	31.4	446.1	15.7
MSTMQ	060	10	6	1017.88	54	59	49	43	63.62	127.23	8	16	18	26	17	31.4	955.0	15.7
MSTMQ	080	05	8	502.65	20	79	79	71	62.83	125.66	4	25	22	33	21	26.6	449.5	19.7
MSTMQ	080	10	8	1005.31	40	79	79	71	62.83	125.66	8	25	22	33	21	26.6	952	19.7
MSTMQ	100	10	10	1005.31	32	99	99	89	62.83	125.66	8	32	33	48	32	125.7	753.96	19.7

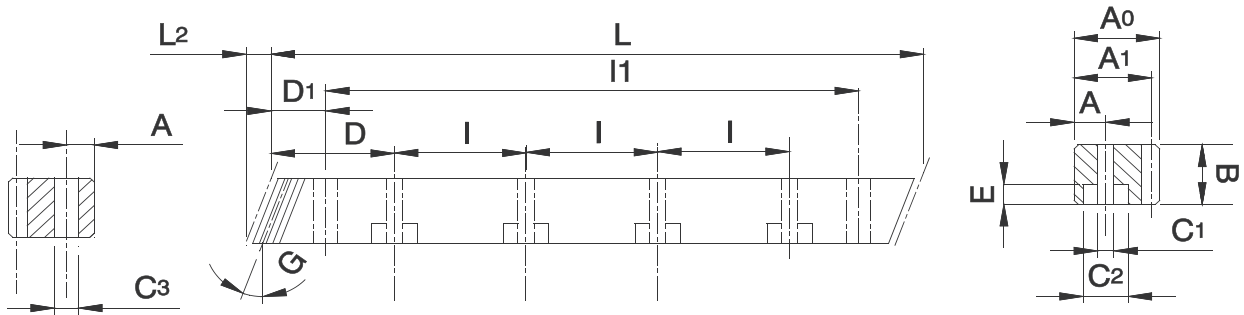
参数说明：	Manufacturing Description:
精度等级：DIN 8e27	Precision Grade: DIN 8e27
材料：(SCM440铬钼合金钢) 42CrMo4	Material: (SCM440 Chromium Molybdenum Alloy Steel) 42CrMo4
齿型：直齿	Type: Straight Rack
齿面处理：精铣	Treatment Of Teeth: Milled
硬度处理：调质处理；硬度HRC21~24度	Hardness: Quenched;HRC21~24 Degree
四面研磨：无	Sides Ground: Not Included
压力角：20度	Pressure Angle: 20 Degree
总齿节误差：0.1mm/1000mm	Total Pitch Error:0.1mm/1000mm



单位/Dimension:mm

型号 Code			模数 Module	L	齿数 Tooth No.	B	A0	A1	D	I	孔数 Hole No.	A	C1	C2	E	D1	I1	C3
MSTMH	010	05	1	499.51	159	15	15	14	-	-	-	-	-	-	-	-	-	-
MSTMH	015	05	1.5	499.51	106	19	19	17.5	62.44	124.88	4	8	7	11	7	29.0	441.5	5.7
MSTMH	015	10	1.5	999.03	212	19	19	17.5	62.44	124.88	8	8	7	11	7	29.0	941.0	5.7
MSTMH	020	05	2	502.65	80	24	24	22	62.83	125.66	4	8	7	11	7	31.3	440.1	5.7
MSTMH	020	10	2	1005.31	160	24	24	22	62.83	125.66	8	8	7	11	7	31.3	942.7	5.7
MSTMH	030	05	3	508.94	54	29	29	26	63.62	127.23	4	9	10	15	9	34.4	440.1	7.7
MSTMH	030	10	3	1017.88	108	29	29	26	63.62	127.23	8	9	10	15	9	34.4	949.1	7.7
MSTMH	040	05	4	502.65	40	39	39	35	62.83	125.66	4	12	10	15	9	37.5	427.7	7.7
MSTMH	040	10	4	1005.31	80	39	39	35	62.83	125.66	8	12	10	15	9	37.5	930.3	7.7
MSTMH	050	05	5	502.65	32	49	49	34	62.83	125.66	4	12	14	20	13	30.1	442.4	11.7
MSTMH	050	10	5	1005.31	64	49	49	34	62.83	125.66	8	12	14	20	13	30.1	945	11.7
MSTMH	060	05	6	508.94	27	59	59	43	63.62	127.23	4	16	18	26	17	31.4	446.1	15.7
MSTMH	060	10	6	1017.88	54	59	59	43	63.62	127.23	8	16	18	26	17	31.4	955.0	15.7
MSTMH	080	05	8	502.65	20	79	79	71	62.83	125.66	4	25	22	33	21	26.6	449.5	19.7
MSTMH	080	10	8	1005.31	40	79	79	71	62.83	125.66	8	25	22	33	21	26.6	952	19.7
MSTMH	100	10	10	1005.31	32	99	99	89	62.83	125.66	8	32	33	48	32	125.7	753.96	19.7

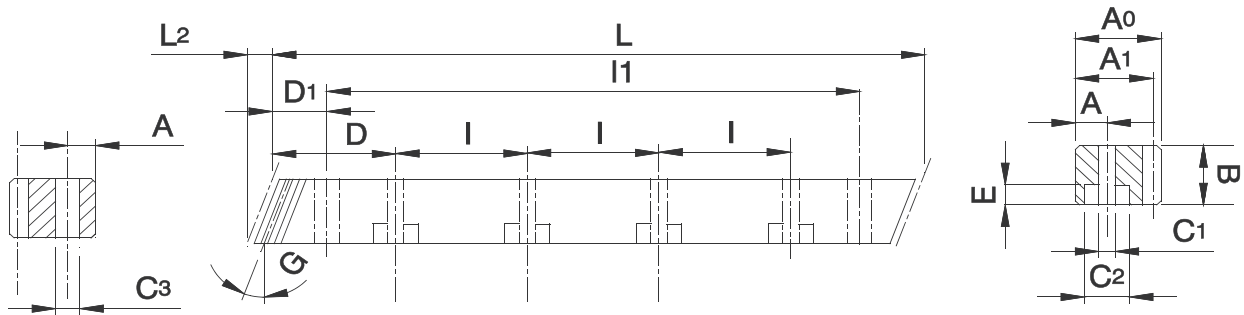
参数说明：	Manufacturing Description:
精度等级：DIN 10e27	Precision Grade: DIN 10e27
材料：(SCM440铬钼合金钢) 42CrMo4	Material: (SCM440 Chromium Molybdenum Alloy Steel) 42CrMo4
齿型：直齿	Type: Straight Rack
齿面处理：精铣	Treatment of Teeth: Milled
硬度处理：高週波，硬度为HRC50~55度	Hardness: High Frequency;HRC50~55Degree
四面研磨：无	Sides ground: Not included
压力角：20度	Pressure Angle: 20 Degree
总齿节误差：0.2mm/1000mm	Total Pitch Error:0.2mm/1000mm



单位/Dimension:mm

型号 Code	模数 Module	L	L2	齿数 Tooth No.	B	A0	A1	D	I	孔数 Hole No.	A	C1	C2	E	D1	I1	C3		
MHTGH	010	05	1	500.00	5.35	150	15	14	-	-	-	-	-	-	-	-	-		
MHTGH	015	05	1.5	500.00	6.7	100	19	19	17.5	62.50	125	4	8	7	11	7	31.7	436.6	5.7
MHTGH	015	10	1.5	1000.00	6.7	200	19	19	17.5	62.50	125	8	8	7	11	7	31.7	936.6	5.7
MHTGH	020	05	2	500.00	8.5	75	24	24	22	62.50	125	4	8	7	11	7	31.7	436.6	5.7
MHTGH	020	10	2	1000.00	8.5	150	24	24	22	62.50	125	8	8	7	11	7	31.7	936.6	5.7
MHTGH	030	05	3	500.00	10.3	50	29	29	26	62.50	125	4	9	10	15	9	35.0	430.0	7.7
MHTGH	030	10	3	1000.00	10.3	100	29	29	26	62.50	125	8	9	10	15	9	35.0	930.0	7.7
MHTGH	040	05	4	506.67	13.8	38	39	39	35	62.50	125	4	12	10	15	9	33.3	433.0	7.7
MHTGH	040	10	4	1000.00	13.8	75	39	39	35	62.50	125	8	12	10	15	9	33.3	933.4	7.7
MHTGH	050	05	5	500.00	17.4	30	49	39	34	62.50	125	4	12	14	20	13	37.5	425.0	11.7
MHTGH	050	10	5	1000.00	17.4	60	49	39	34	62.50	125	8	12	14	20	13	37.5	925.0	11.7
MHTGH	060	05	6	500.00	20.9	25	59	49	43	62.50	125	4	16	18	26	17	37.5	425.0	15.7
MHTGH	060	10	6	1000.00	20.9	50	59	49	43	62.50	125	8	16	18	26	17	37.5	925.0	15.7
MHTGH	080	05	8	480.00	28.0	18	79	79	71	60.00	120	4	25	22	33	21	120.0	240.0	19.7
MHTGH	080	10	8	960.00	28.0	36	79	79	71	60.00	120	8	25	22	33	21	120.0	720.0	19.7
MHTGH	100	10	10	1000.00	35.11	30	99	99	89	62.50	125	8	32	33	48	32	125.0	750.0	19.7

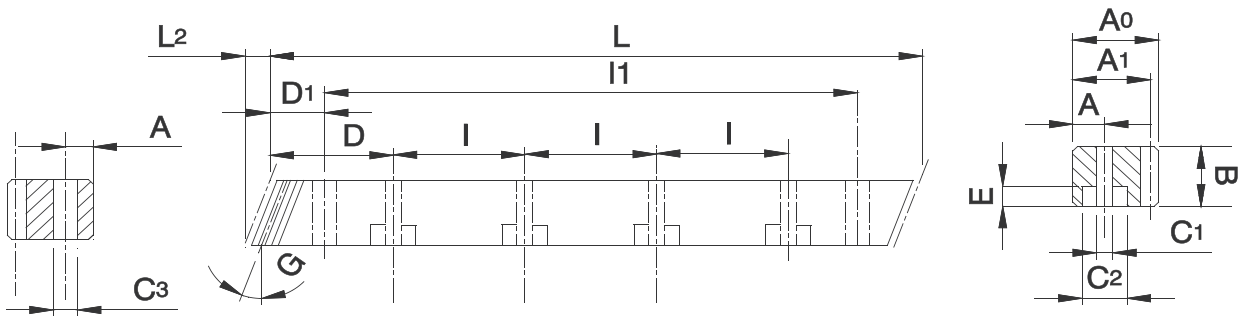
参数说明：	Manufacturing Description:
精度等级：DIN 6h25	Precision Grade: DIN6h25
材料：(SCM440铬钼合金钢) 42CrMo4	Material: (SCM440 Chromium Molybdenum Alloy Steel)42CrMo4
齿型：斜齿	Type: Helical Rack
齿面处理：磨削	Treatment of Teeth: Ground
硬度处理：高週波,硬度为HRC50~55度	Hardness: High Frequency.HRC50~55Degree
四面研磨：有	Sides Ground: included
右旋角：19° 31'42"	Right Hand Angle: 19° 31'42"
压力角：20度	Pressure Angle: 20 Degree
总齿节误差:0.036mm/1000mm	Total Pitch Error:0.036mm/1000mm



单位/Dimension:mm

型号 Code	模数 Module	L	L2	齿数 Tooth No.	B	A0	A1	D	I	孔数 Hole No	A	C1	C2	E	D1	I1	C3
MHTMQ 010 05	1	500.00	5.35	150	15	15	14	-	-	-	-	-	-	-	-	-	-
MHTMQ 015 05	1.5	500.00	6.7	100	19	19	17.5	62.5	125	4	8	7	11	7	31.7	436.6	5.7
MHTMQ 015 10	1.5	1000.00	6.7	200	19	19	17.5	62.5	125	8	8	7	11	7	31.7	936.6	5.7
MHTMQ 020 05	2	500.00	8.9	75	24	24	22	62.5	125	4	8	7	11	7	31.7	436.6	5.7
MHTMQ 020 10	2	1000.00	8.9	150	24	24	22	62.5	125	8	8	7	11	7	31.7	936.6	5.7
MHTMQ 030 05	3	500.00	10.6	50	29	29	26	62.5	125	4	9	10	15	9	35.0	430.0	7.7
MHTMQ 030 10	3	1000.00	10.6	100	29	29	26	62.5	125	8	9	10	15	9	35.0	930.0	7.7
MHTMQ 040 05	4	506.67	14.2	38	39	39	35	62.5	125	4	12	10	15	9	33.3	433.0	7.7
MHTMQ 040 10	4	1000.00	14.2	75	39	39	35	62.5	125	8	12	10	15	9	33.3	933.4	7.7
MHTMQ 050 05	5	500.00	17.4	30	49	49	34	62.5	125	4	12	14	20	13	37.5	425.0	11.7
MHTMQ 050 10	5	1000.00	17.4	60	49	49	34	62.5	125	8	12	14	20	13	37.5	925.0	11.7
MHTMQ 060 05	6	500.00	20.9	25	59	59	43	62.5	125	4	16	18	26	17	37.5	425.0	15.7
MHTMQ 060 10	6	1000.00	20.9	50	59	59	43	62.5	125	8	16	18	26	17	37.5	925.0	15.7
MHTMQ 080 05	8	480.00	28.0	18	79	79	71	60.0	120	4	25	22	33	21	120.0	240.0	19.7
MHTMQ 080 10	8	960.00	28.0	36	79	79	71	60.0	120	8	25	22	33	21	120.0	720.0	19.7
MHTMQ 100 10	10	1000.00	35.11	30	99	99	89	62.5	125	8	32	33	48	32	125.0	750.0	19.7

参数说明：	Manufacturing Description:
精度等级：DIN 8e27	Precision Grade: DIN 8e27
材料：(SCM440铬钼合金钢) 42CrMo4	Material: (SCM440 Chromium Molybdenum Alloy Steel) 42CrMo4
齿型：斜齿	Type: Helical Rack
齿面处理：精铣	Treatment of Teeth: Milled
硬度处理：调质处理，硬度为HRC21~24度	Hardness: Quenched; HRC21~24 Degree
四面研磨：无	Sides ground: not included
右旋角：19° 31'42"	Right Hand Angle: 19° 31'42"
压力角：20度	Pressure Angle: 20 Degree
总齿节误差：0.1mm/1000mm	Total pitch error:0.1mm/1000mm

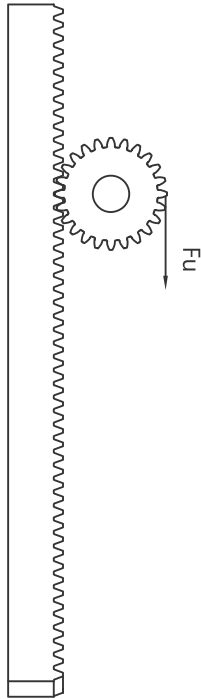


单位/Dimension:mm

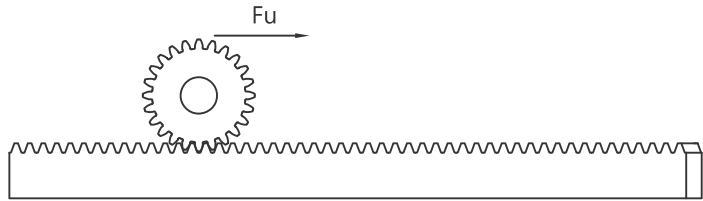
型号 Code			模数 Module	L	L2	齿数 Tooth No.	B	A0	A1	D	I	孔数 Hole No.	A	C1	C2	E	D1	I1	C3	
MHTMH	010	05	1	500.00	5.35	150	15	15	14	-	-	-	-	-	-	-	-	-	-	-
MHTMH	015	05	1.5	500.00	6.7	100	19	19	17.5	62.5	125	4	8	7	11	7	31.7	436.6	5.7	
MHTMH	015	10	1.5	1000.00	6.7	200	19	19	17.5	62.5	125	8	8	7	11	7	31.7	936.6	5.7	
MHTMH	020	05	2	500.00	8.5	75	24	24	22	62.5	125	4	8	7	11	7	31.7	436.6	5.7	
MHTMH	020	10	2	1000.00	8.5	150	24	24	22	62.5	125	8	8	7	11	7	31.7	936.6	5.7	
MHTMH	030	05	3	500.00	10.3	50	29	29	26	62.5	125	4	9	10	15	9	35.0	430.0	7.7	
MHTMH	030	10	3	1000.00	10.3	100	29	29	26	62.5	125	8	9	10	15	9	35.0	930.0	7.7	
MHTMH	040	05	4	506.67	13.8	38	39	39	35	62.5	125	4	12	10	15	9	33.3	433.0	7.7	
MHTMH	040	10	4	1000.00	13.8	75	39	39	35	62.5	125	8	12	10	15	9	33.3	933.4	7.7	
MHTMH	050	05	5	500.00	17.4	30	49	39	34	62.5	125	4	12	14	20	13	37.5	425.0	11.7	
MHTMH	050	10	5	1000.00	17.4	60	49	39	34	62.5	125	8	12	14	20	13	37.5	925.0	11.7	
MHTMH	060	05	6	500.00	20.9	25	59	49	43	62.5	125	4	16	18	26	17	37.5	425.0	15.7	
MHTMH	060	10	6	1000.00	20.9	50	59	49	43	62.5	125	8	16	18	26	17	37.5	925.0	15.7	
MHTMH	080	05	8	480.00	28.0	18	79	79	71	60.0	120	4	25	22	33	21	120	240.0	19.7	
MHTMH	080	10	8	960.00	28.0	36	79	79	71	60.0	120	8	25	22	33	21	120	720.0	19.7	
MHTMH	100	10	10	1000.00	35.11	30	99	99	89	62.5	125	8	32	33	48	32	125	750.0	19.7	

参数说明：	Manufacturing Description:
精度等级：DIN10e27	Precision Grade: DIN10e27
材料：(SCM440铬钼合金钢)42CrMo4	Material: (SCM440 Chromium Molybdenum Alloy Steel)42CrMo4
齿型：斜齿	Type: Helical Rack
齿面处理：精铣	Treatment of Teeth: Milled
硬度处理：高週波,硬度为HRC50~55度	Hardness: High Frequency.HRC50~55 Degree
四面研磨：无	Sides Ground: not included
右旋角：19° 31'42"	Right Hand Angle: 19° 31'42"
压力角：20度	Pressure Angle: 20 Degree
总齿节误差：0.2mm/1000mm	Total Pitch Error: 0.2mm/1000mm

齿条传动形式 (selection rack and pinion drive)



上升/下降(lift/lower)
 $F_u = m \cdot g + m \cdot a$



水平(drive)
 $F_u = m \cdot g \cdot \mu + m \cdot a$

名称 (Description)	公式 (formula)	单位 (dimension)
加速度 (Acceleration)	$a = \frac{v}{t} = \frac{2 \cdot s}{t^2}$	m/s ²
速度 (Speed)	$v = \frac{s}{t} = \sqrt{2 \cdot a \cdot s}$	m/s
距离 (Distance)	s	m
时间 (Time)	t	s
转速 (Rpm)	$n = \frac{v \cdot 60}{\pi \cdot d_0}$	1/min
分度圆直径 (Pitch Diameter)	d ₀	mm
扭矩 (Torque)	$M = \frac{F_u \cdot d_0}{2000}$	Nm
功率 (Power)	$P = \frac{M \cdot n}{9550} = \frac{F_u \cdot n \cdot d_0}{19100}$	kw
使用系数	1.0	Application factor: 1.0
齿间连接安全系数	1.0	Safety Factor of Teeth Connection 1.0
防齿裂安全系数	1.4	Safety Factor of prevention of teeth cracking 1.4
使用寿命	20,000h	Life Time 20,000 hrs 20,000h

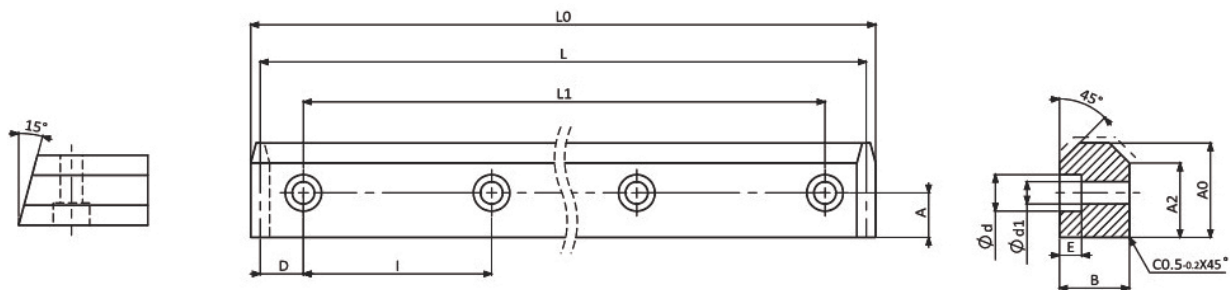


导轨齿条目录
Content of Guideway Racks

型号 Code	材料 Material	齿条齿型 Type	齿条齿型 Type	棒型 Shape	齿面处理 Teeth Treatment	硬度处理 Hardness	周节 CP	精度等级 Grade DIN
MSVGH-CP	SCM440	直齿 Straight	V型导轨齿条 V Type Guideway Rack	六角棒 Hexgan	齿研 Teeth Ground	热处理 Hardened HRC 53°-58°	5,7.5,10	DIN6
MNVGH-00	SCM440	N/A	V型导轨 V Type Guideway	六角棒 Hexgan	研磨 Ground	热处理 Hardened HRC 53°-58°	N/A	DIN6
MSTGH-CP	SCM440	直齿 Straight	平轨导轨 Guideway Rack	四角棒 Tetragon	齿研 Teeth Ground	热处理 Hardened HRC 53°-58°	5,7.5,10	DIN6
MNTGH-00	SCM440	N/A	平面导轨 Guideway	四角棒 Tetragon	研磨 Ground	热处理 Hardened HRC 53°-58°	N/A	DIN6

导轨齿条型号说明
Guideway Rack Code Instruction

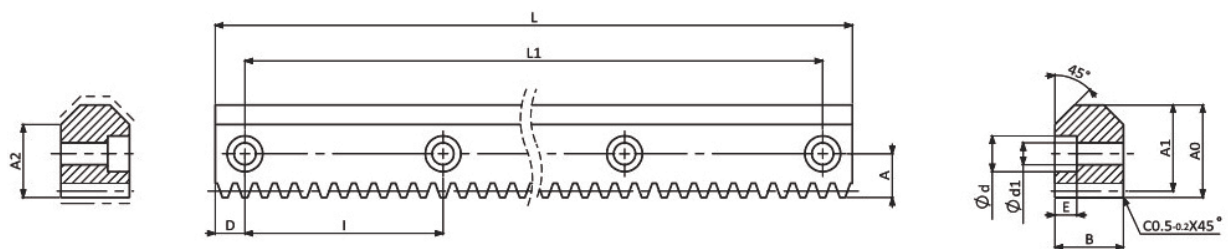
材料 Material	齿型 Type	棒型 Shape	齿面处理 Teeth Treatment	硬度处理 Hardness	周节 Circular Pitch	长度 Length	等级 Grade
M	S/H	V/T	G	H	CP	10	Q6
M=SCM440	S=直齿 H=斜齿	V=V型棒 T=四角棒(平面)	G=齿研/研磨	H=硬化处理	CP=周节	CP5=1030 CP7.5=1230 CP10=1230	Q=DIN
	S=Straight H=Helical	V=V Type Bar T=Tetragon Bar	G=Teeth Ground /Ground	H=Hardened	CP=Circular Pitch		



单位/Dimension:mm

型号 Code	序号 No	Q	L0	L	L1	B	A0	D	I	ød	ød1	E	A2	KG
MNVGH-00	1	-Q6	1033.89	1030	1000	14.5	24.5	15	100	11	7	6.8	20.0	2.3
MNVGH-00	2	-Q6	1035.23	1030	1000	19.5	29.5	15	100	15	9	9	23.5	3.6
MNVGH-00	3	-Q6	1236.62	1230	1200	24.7	33.0	15	100	15	9	9	25.2	6.3
MNVGH-00	4	-Q6	1239.27	1230	1200	34.6	46.6	15	100	18	11	11	36.7	12.5

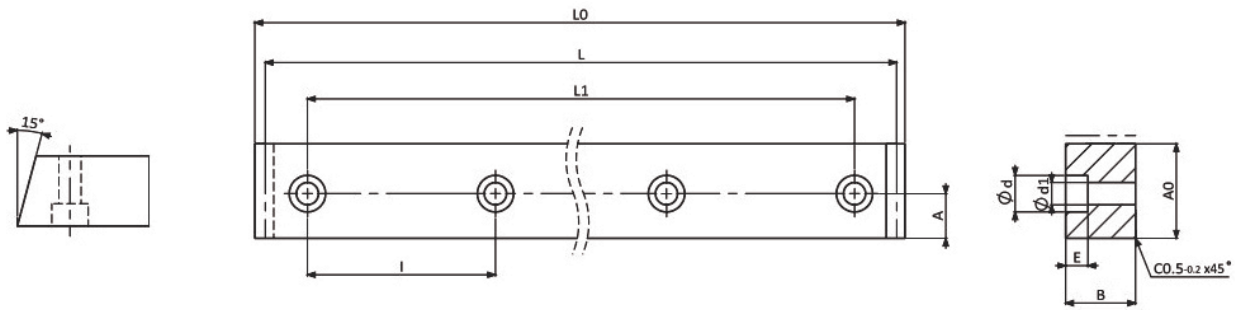
系列MNVGH-00-Q6 V型研磨导轨	Series MNVGH-00-Q6 V Type Ground Guideway
材料 SCM440 (铬钼合金钢)	Material SCM440 (Chromium Molybdenum Alloy Steel)
硬度 HRC 53°~58°	Hardness HRC 53°~58°
硬化处理后六面研磨	6 Sides Ground after hardening.



单位/Dimension:mm

型号 Code	序号 No	Q	周节 CP	L	L1	模数 Module	B	A0	A1	D	I	A	ød	ød1	E	A2	KG
MSVGH-CP 050 10	1	-Q6	5	1030	1000	1.5915	14.5	24.5	22.91	15	100	11.5	11	7	6.8	20.0	2.2
MSVGH-CP 050 10	2	-Q6	5	1030	1000	1.5915	19.5	29.5	27.91	15	100	14.0	15	9	9	23.5	3.5
MSVGH-CP 075 12	1	-Q6	7.5	1230	1200	2.3873	24.7	33.0	30.61	15	100	14.5	15	9	9	25.2	5.8
MSVGH-CP 100 12	1	-Q6	10	1230	1200	3.1831	34.6	46.6	43.42	15	100	18	18	11	11	36.7	11.7

系列MSVGH-CP-Q6 直齿V型齿研导轨齿条	Series MSVGH-CP-Q6 Straight V Type Ground Guideway Racks
材料 SCM440 (铬钼合金钢)	Material SCM440 (Chromium Molybdenum Alloy Steel)
硬度 HRC 53°~58°	Hardness HRC 53°~58°
硬化处理后六面研磨与齿研	6 Sides Ground and Teeth Ground after hardening.



单位/Dimension:mm

型号 Code	序号 No	Q	L0	L	L1	B	A0	D	I	ød	ød1	E	KG
MNTGH-00	1	-Q6	1033.89	1030	1000	14.5	24.5	15	100	11	7	6.8	2.5
MNTGH-00	2	-Q6	1035.23	1030	1000	19.5	29.5	15	100	15	9	9	4.0
MNTGH-00	3	-Q6	1236.62	1230	1200	24.7	33.0	15	100	15	9	9	6.8
MNTGH-00	4	-Q6	1239.27	1230	1200	34.6	46.6	15	100	18	11	11	13.4

系列MNTGH-00-Q6 研磨平面导轨

Series MNTGH-00-Q6 Ground Guideway

材料 SCM440 (铬钼合金钢)

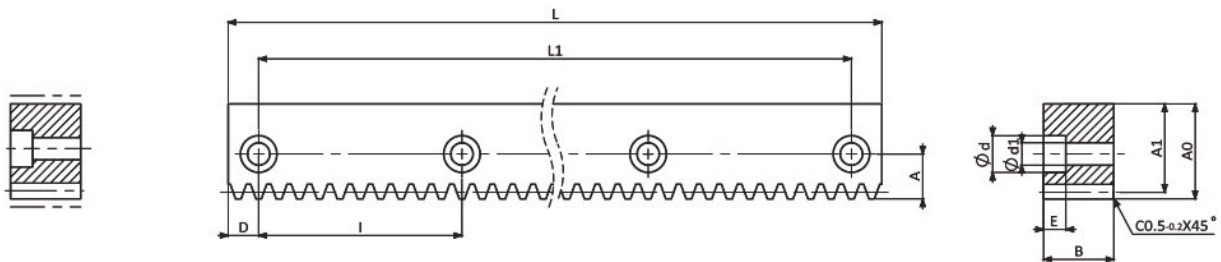
Material SCM440 (Chromium Molybdenum Alloy Steel)

硬度 HRC 53°~58°

Hardness HRC 53°~58°

硬化处理后四面研磨

4 Sides Ground after hardening.



单位/Dimension:mm

型号 Code	序号 No	Q	周节 CP	L	L1	模数 Module	B	A0	A1	D	I	A	ød	ød1	E	KG
MSTGH-CP 050 10	1	-Q6	5	1030	1000	1.5915	14.5	24.5	22.91	15	100	11.5	11	7	6.8	2.2
MSTGH-CP 050 10	2	-Q6	5	1030	1000	1.5915	19.5	29.5	27.91	15	100	14.0	15	9	9	3.5
MSTGH-CP 075 12	1	-Q6	7.5	1230	1200	2.3873	24.7	33.0	30.61	15	100	14.5	15	9	9	5.8
MSTGH-CP 100 12	1	-Q6	10	1230	1200	3.1831	34.6	46.6	43.42	15	100	18	18	11	11	11.7

系列MSTGH-CP-Q6 齿研平轨齿条

Series MSTGH-CP-Q6 Ground Guideway Racks

材料 SCM440 (铬钼合金钢)

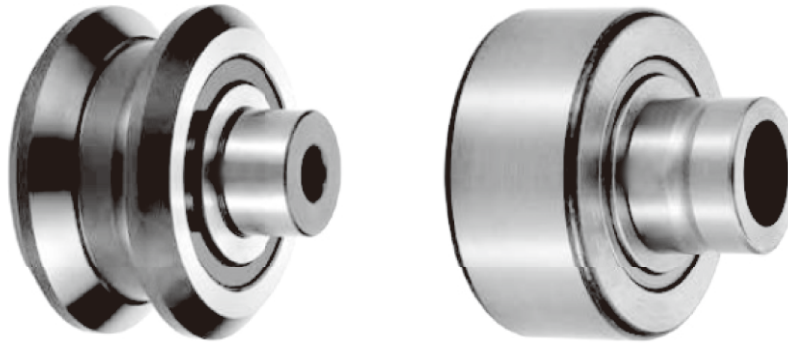
Material SCM440 (Chromium Molybdenum Alloy Steel)

硬度 HRC 53°~58°

Hardness HRC 53°~58°

硬化处理后四面研磨与齿研

4 Sides Ground and Teeth Ground after hardening.

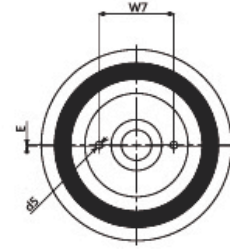
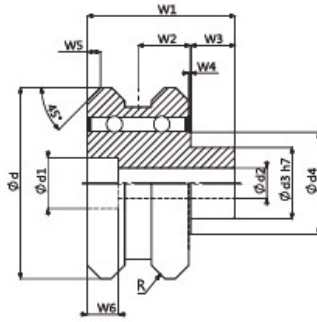


滚轮目录
Content of Rollers

型号 Code	材料 Material	滚轮形状 Type	心轴外径 Shaft Dia.
UV	SUJ2 (100Cr6)	导轨滚轮 V Type Roller	15 20 25 35
UR	SUJ2 (100Cr6)	平轨滚轮 Round Roller	15 20 25 35

滚轮型号说明
Rollers Code Instruction

材料 Material	形状 Type	心轴外径 Shaft Diameter	偏心量 Excenter
U=轴承钢	V=V型 R=圆型	15 20	Y=1mm N=0mm
U=SUJ2 (100Cr6)	V=V Type R=Round	25 35	Y=1mm N=0mm

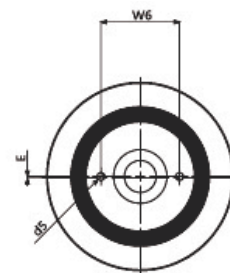
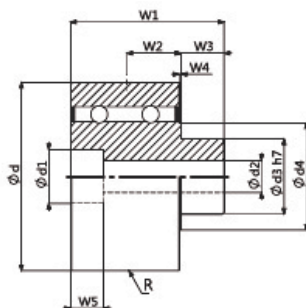


导轨滚轮
V Type Roller

单位/Dimension:mm

型号 Code	心轴外径 Shaft Dia.	偏心量 Excenter	φd	φd1	W1	W5	W2	W3	W4	W6	R	φd2	φd3	φd4	W7	d5	Ga(μm)	KG
UV15Y	15	1 mm	53	13.5	35	2	12	12	1	9	R250	8.4	15h7	23.8	18.5	2.6x3	-3/+5	0.23
UV15N	15	0 mm	53	13.5	35	2	12	12	1	9	R250	8.4	15h7	23.8	18.5	2.6x3	-3/+5	0.23
UV20Y	20	1 mm	63	16.5	46	3	16	15	1	11	R300	10.5	20h7	27.7	22.5	2.6x3	-3/+5	0.45
UV20N	20	0 mm	63	16.5	46	3	16	15	1	11	R300	10.5	20h7	27.7	22.5	2.6x3	-3/+5	0.45
UV25Y	25	1 mm	77	20.5	60	3.5	20.5	20	1	13	R360	13	25h7	35.6	27.5	4.1x4.5	-3/+5	1.00
UV25N	25	0 mm	77	20.5	60	3.5	20.5	20	1	13	R360	13	25h7	35.6	27.5	4.1x4.5	-3/+5	1.00
UV35Y	35	1 mm	107	28.5	84	7.5	30	25	1	17.5	R500	17	40h7	56.9	42	4.1x4.5	-3/+5	2.50
UV35N	35	0 mm	107	28.5	84	7.5	30	25	1	17.5	R500	17	40h7	56.9	42	4.1x4.5	-3/+5	2.50

Ga(μm)内部轴向间隙/Internal Axial Tolerance

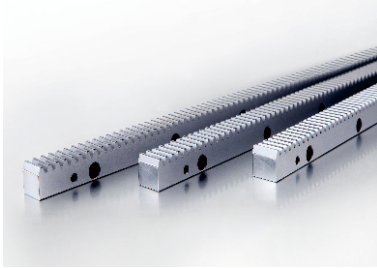


平衡滚轮
Round Roller

单位/Dimension:mm

型号 Code	心轴外径 Shaft Dia.	偏心率 Excenter	∅d	∅d1	W1	W2	W3	W4	W5	R	∅d2	∅d3	∅d4	W6	d5	Ga(μm)	KG
UR15Y	15	1 mm	47	13.5	35	12	12	1	9	R500	8.4	15h7	23.8	18.5	2.6x3	-3/+5	0.16
UR20Y	20	1 mm	72	16.5	46	16	15	1	11	R500	10.5	20h7	27.7	22.5	2.6x3	-3/+5	0.63
UR25Y	25	1 mm	85	20.5	60	20.5	20	1	13	R500	13	25h7	35.6	27.5	4.1x4.5	-3/+5	1.00
UR35Y	35	1 mm	100	28.5	84	30	25	1	17.5	R500	17	40h7	56.9	42	4.1x4.5	-3/+5	2.70

JIUMI TRANSMISSION CO.,LTD.



此样本中所有产品型号及参数如有更改恕不另行通告，订货前请与本公司联络确认。

You are welcome to contact with us on the models and parameters of all products in this catalogue, in case that there are some corrections, improvements or updates.

合肥九米传动技术有限公司

HEFEI JIUMI TRANSMISSION TECHNOLOGY CO., LTD.

地址：合肥市双凤开发区凤麟路与淮南
路交口联合智能数控产业园内1号
电话：19164441888 胡经理